

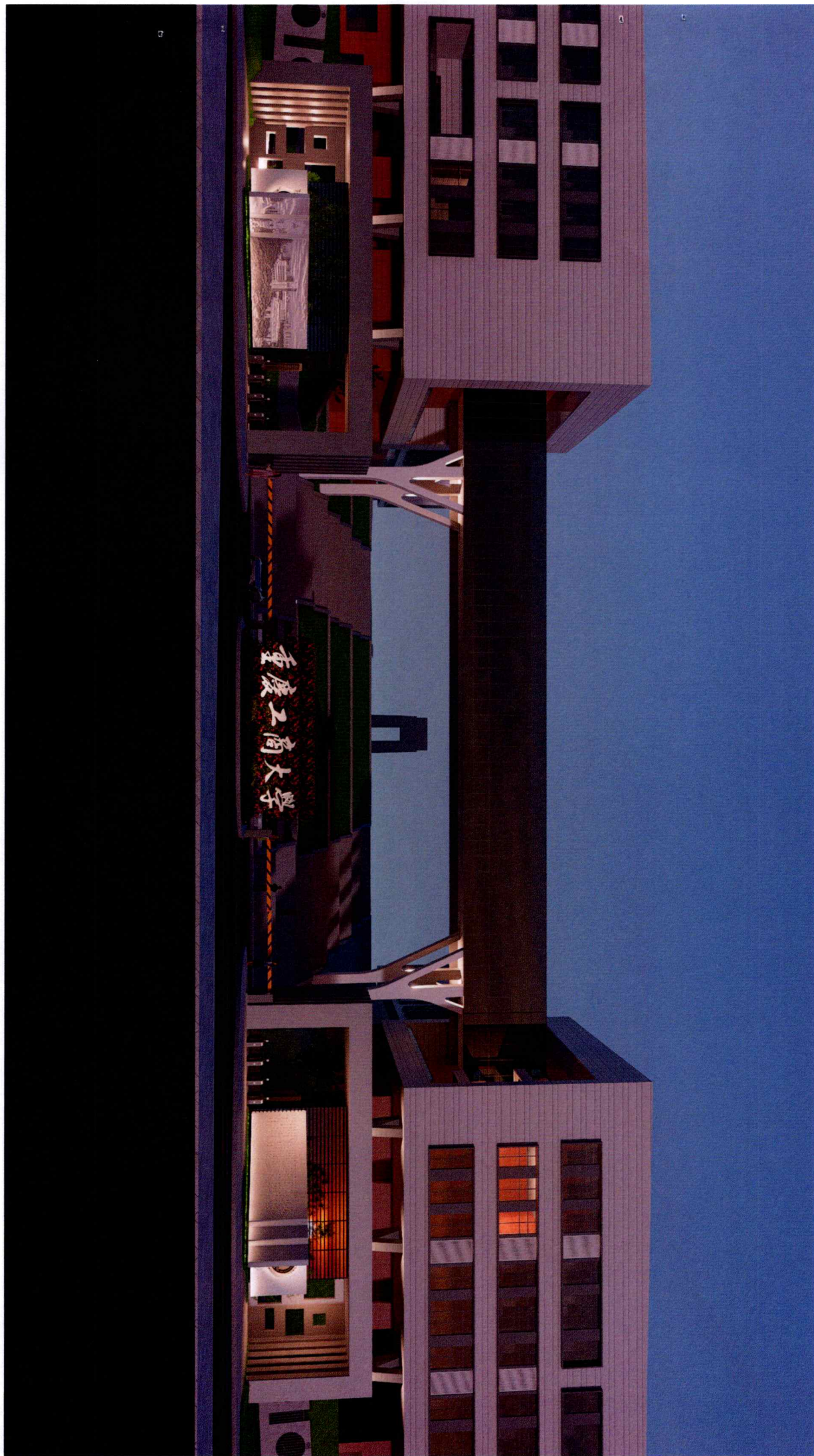


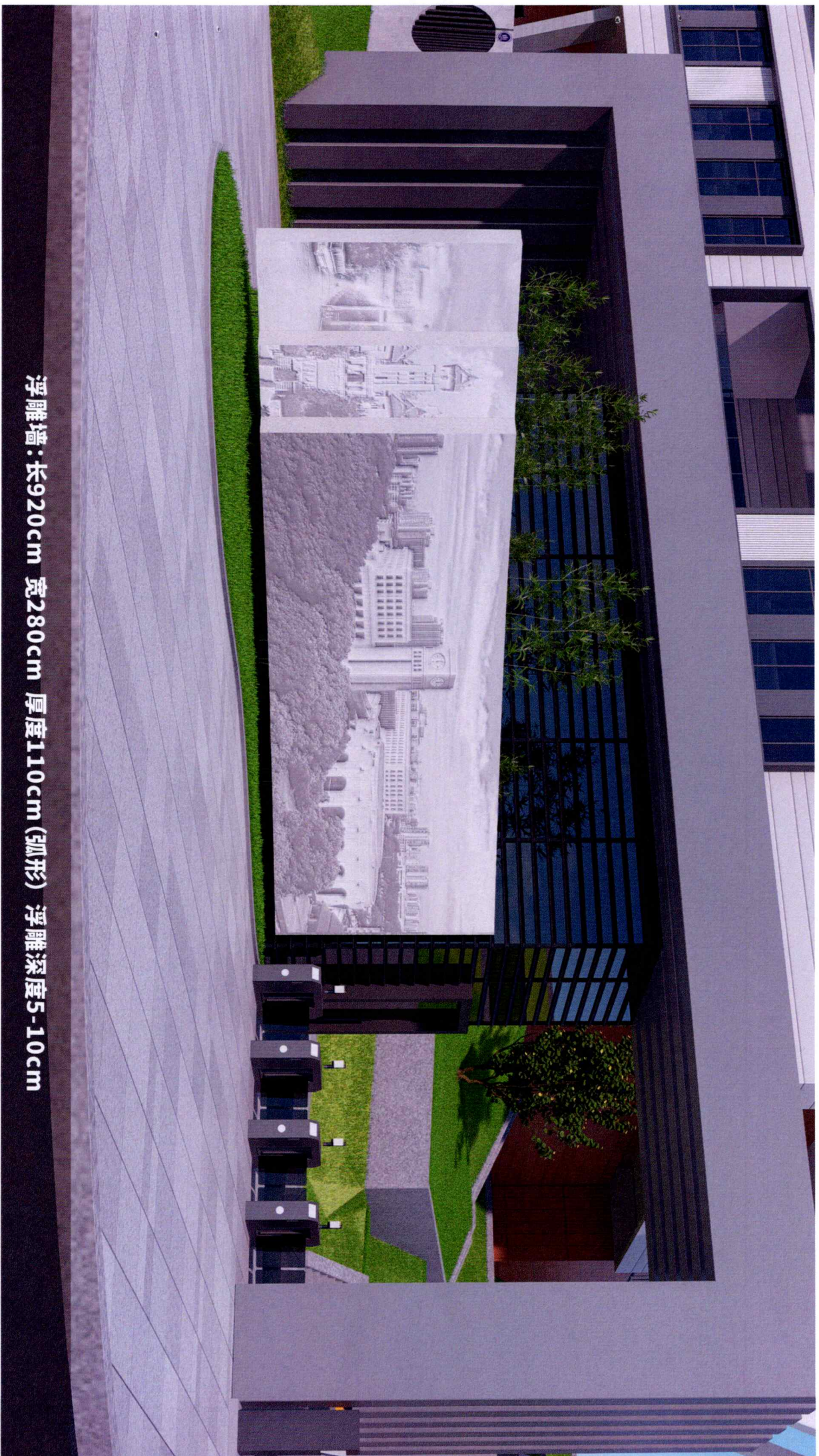
重庆工商大学
CHONGQING TECHNOLOGY AND BUSINESS UNIVERSITY



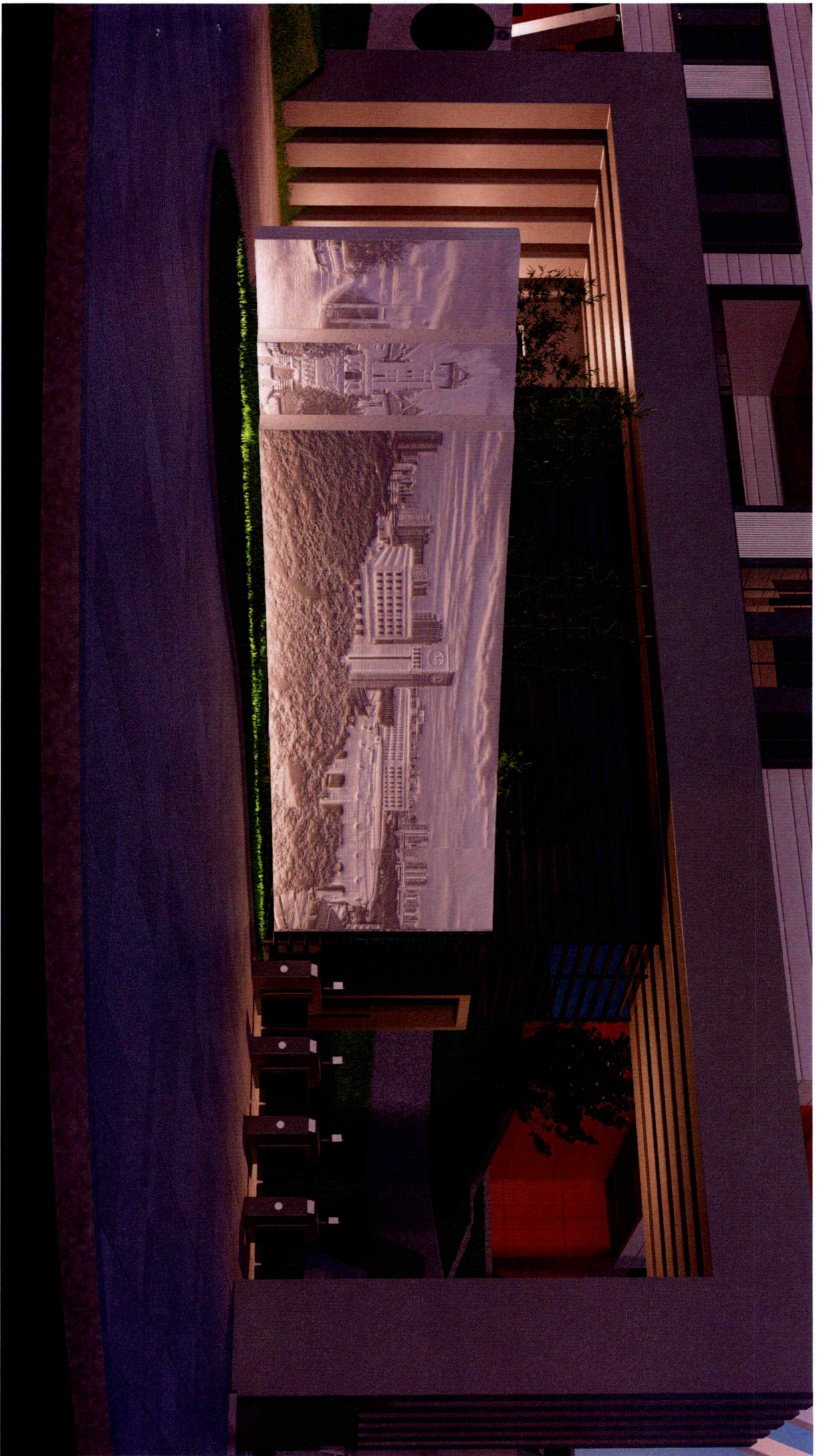
校门文化墙设计方案

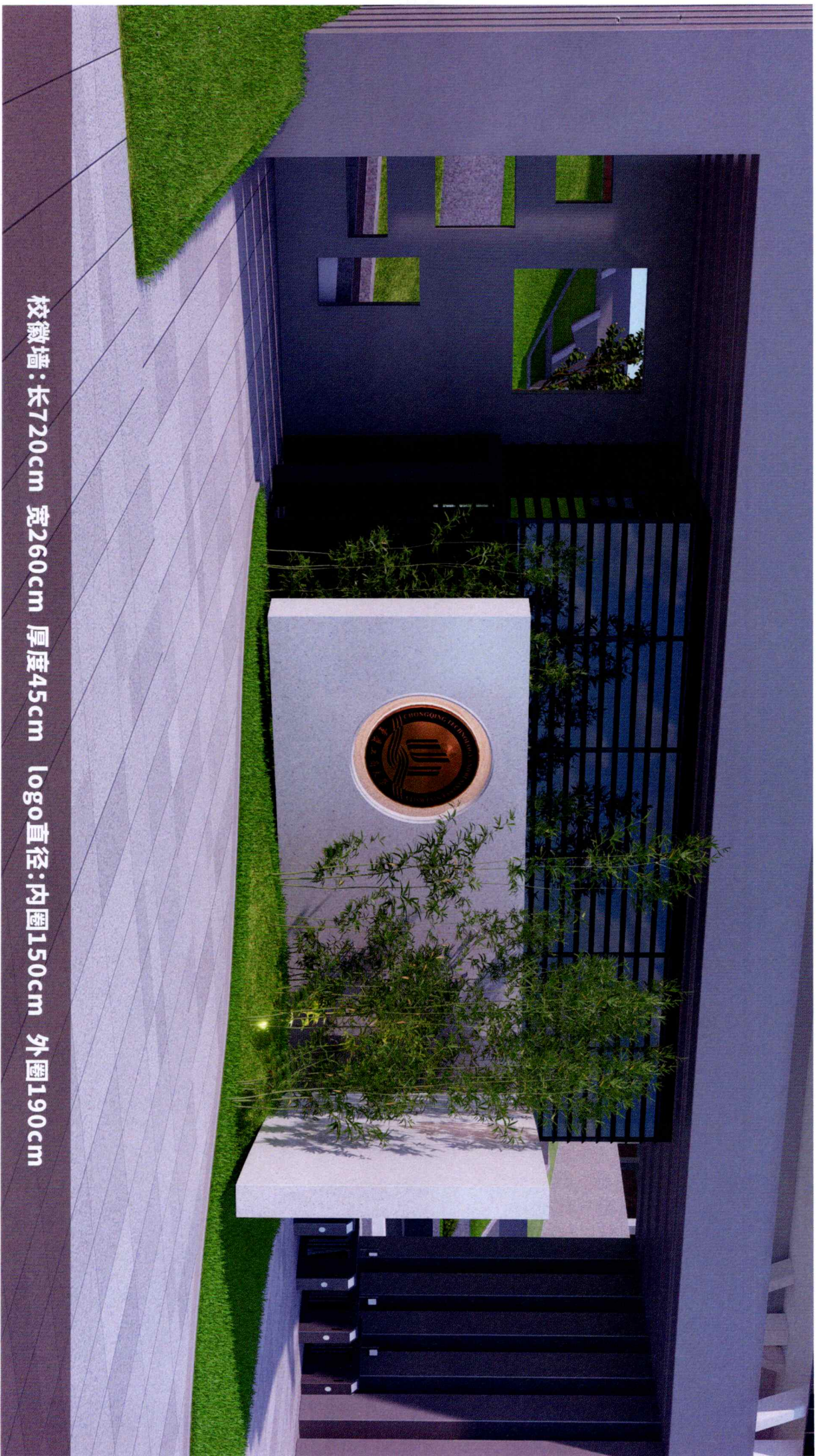






浮雕墙:长920cm 宽280cm 厚度110cm(弧形) 浮雕深度5-10cm





校徽墙:长720cm 宽260cm 厚度45cm logo直径:内圈150cm 外圈190cm

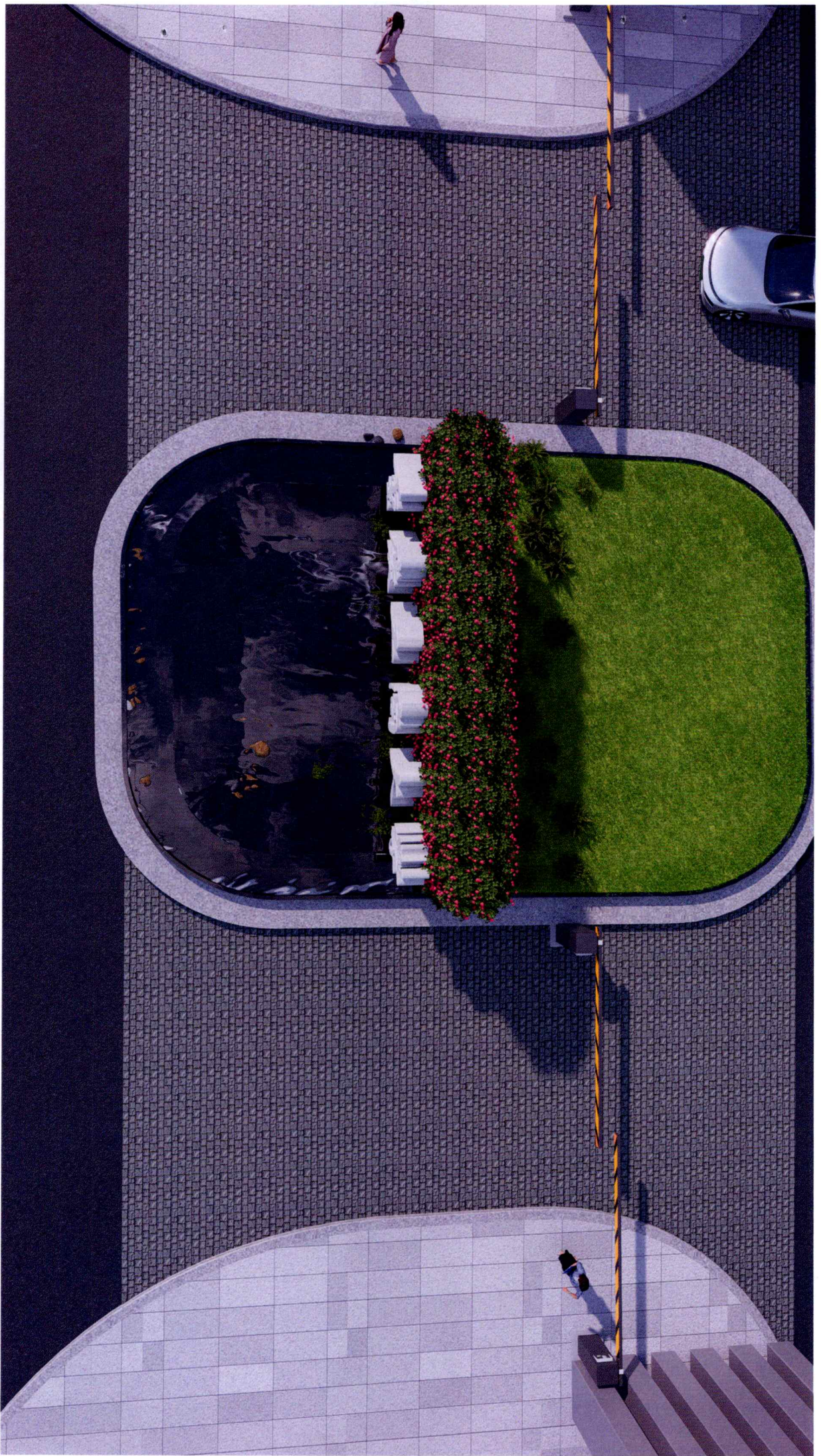


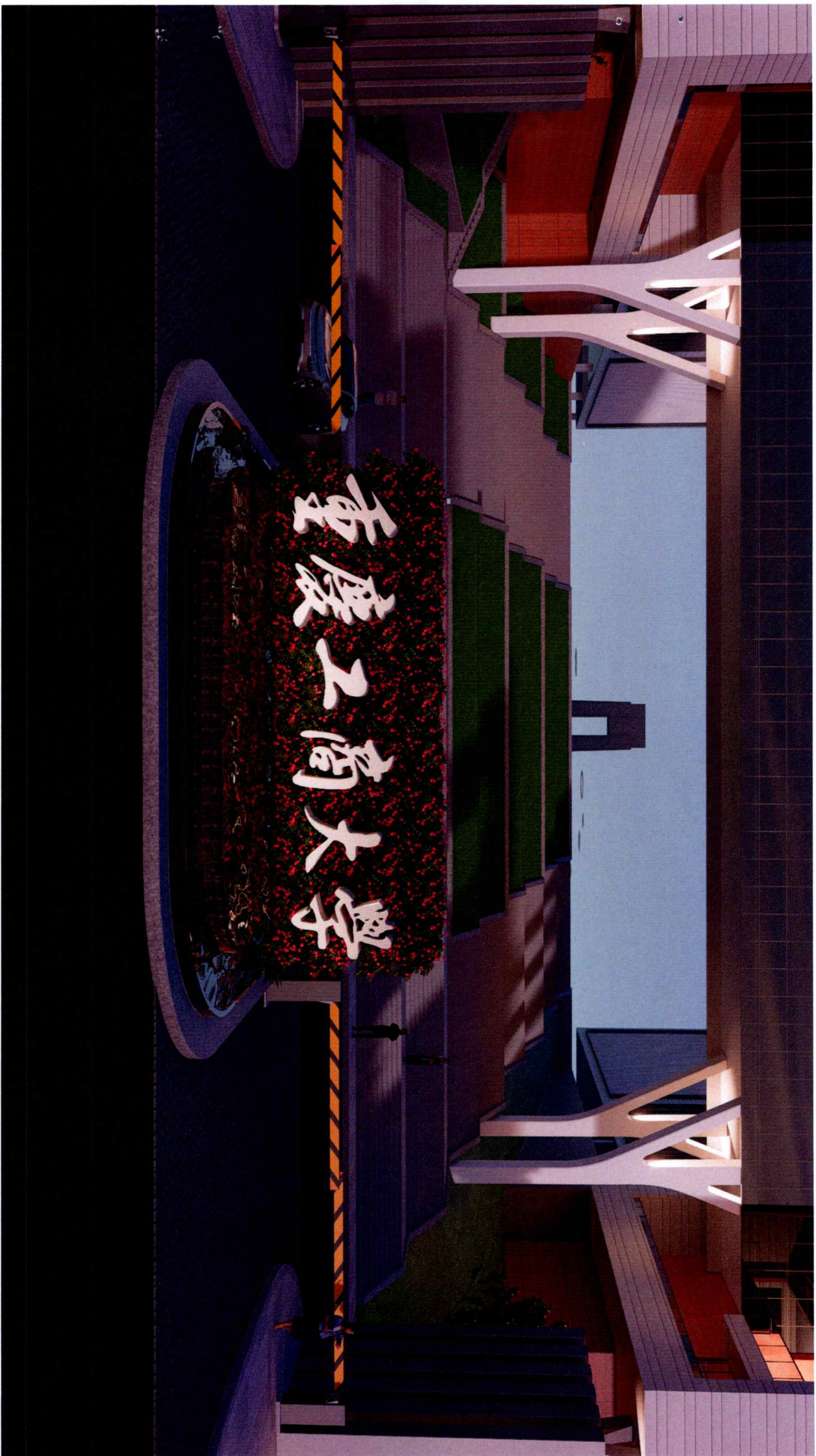


不锈钢架焊接定制烤漆饰面：高180cm 宽度800cm 厚度50cm 波浪：长800cm 宽120cm(最高点) 厚度60cm



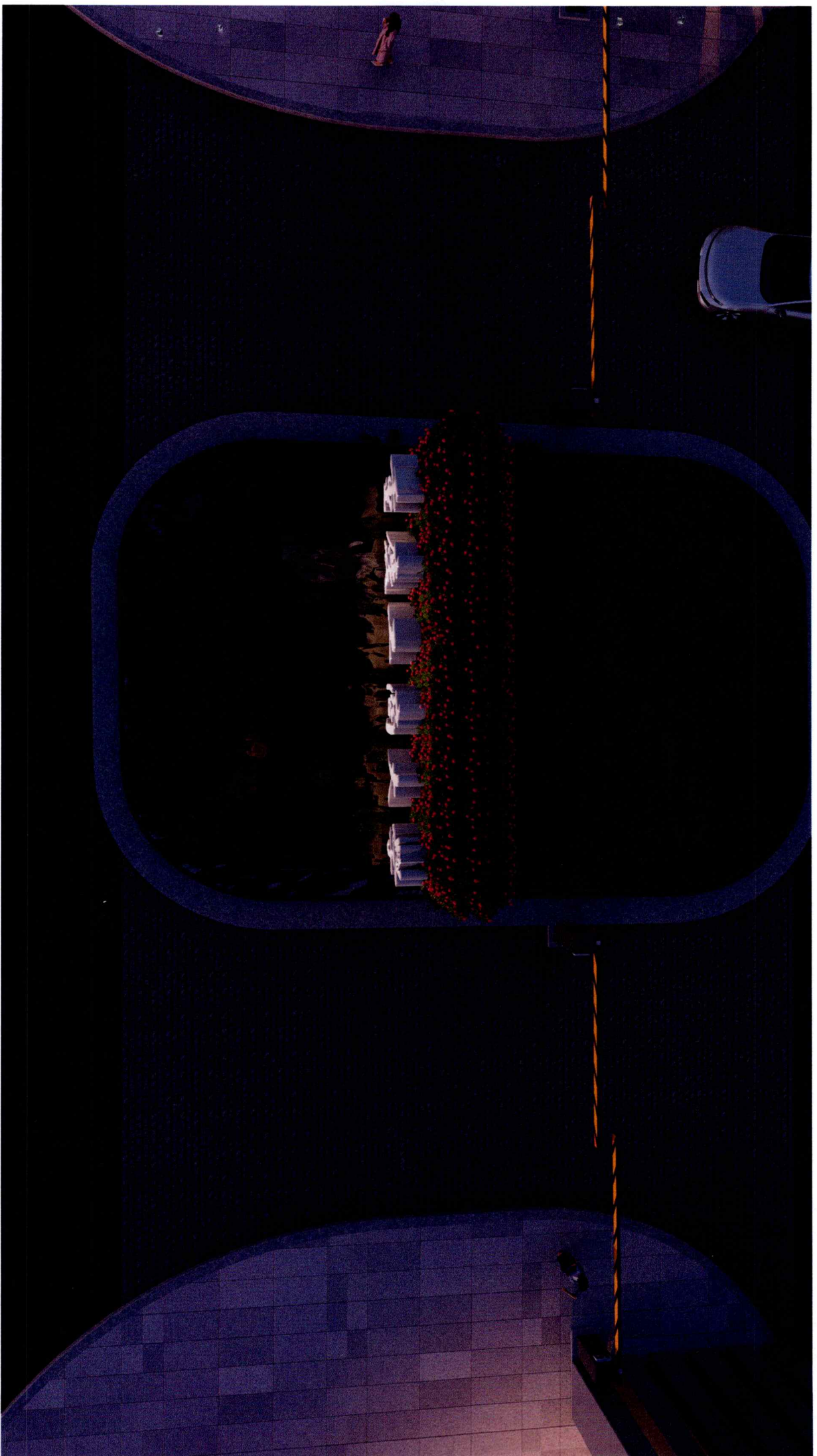


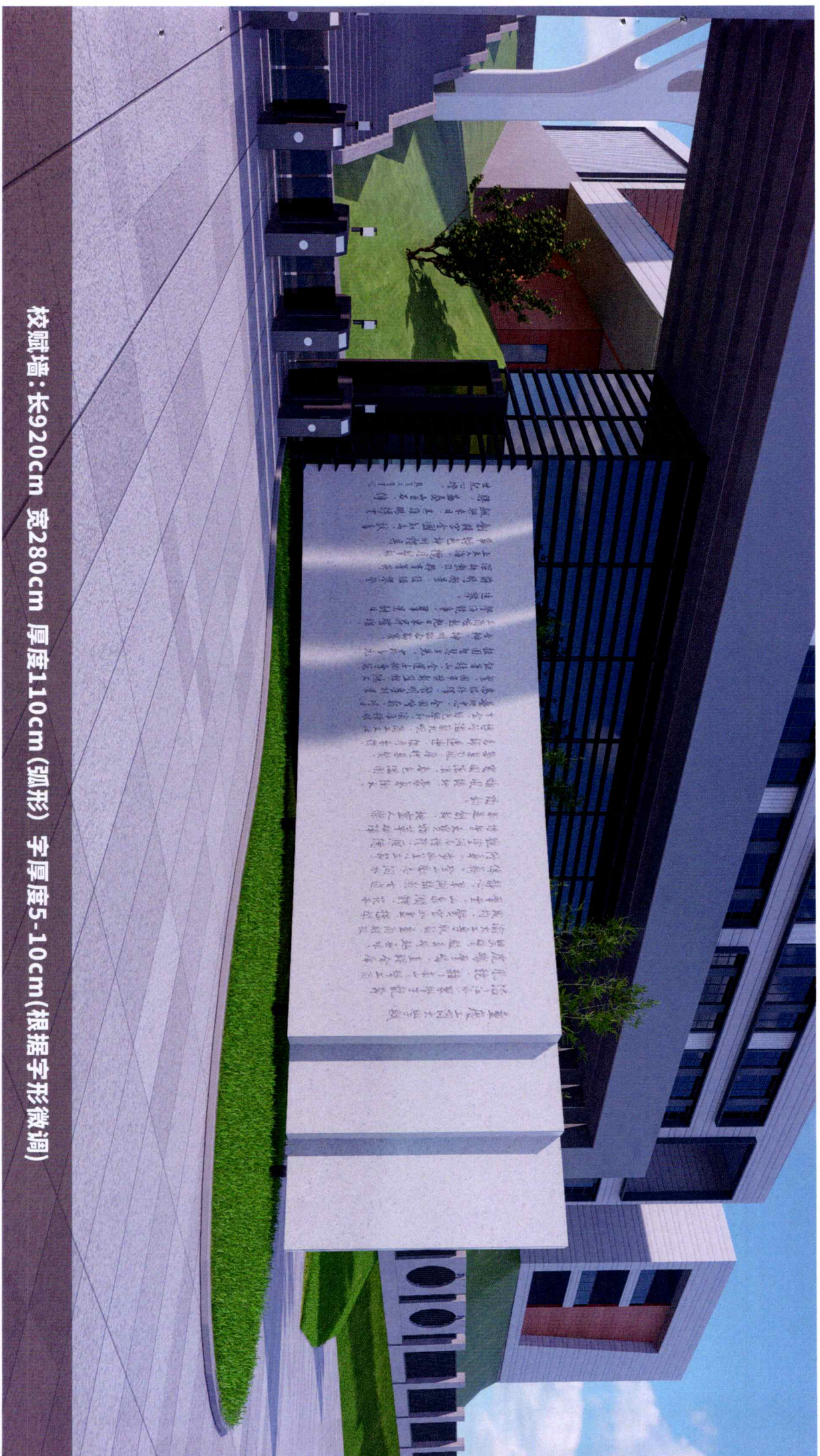












校赋墙：长920cm 宽280cm 厚度110cm (弧形) 字厚度5-10cm (根据字形微调)

